



# MULTILINE SYSTEMS - GREASE AND OIL

Multiline systems are commonly called “Pump to point” systems as lubricant is fed directly from each of the pumping elements located in the pump body via it’s own line to the lube point.

In the case of the PEG-250N Multiline pump (350 Bar) up to 15 pumping elements can be fitted.

Both fixed output and adjustable pumping elements are available. Each pump element incorporates an adjustable relief valve to visually advise of a blockage down stream.



PEG - 5N

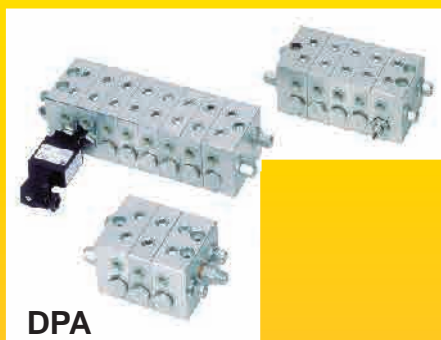
Further flexibility of the system can be achieved by adding progressive lubricant dividers to some or all outlet lines to cover additional lube points.

When micro or proximity switches are added to these dividers extensive electrical monitoring of the system can be achieved.

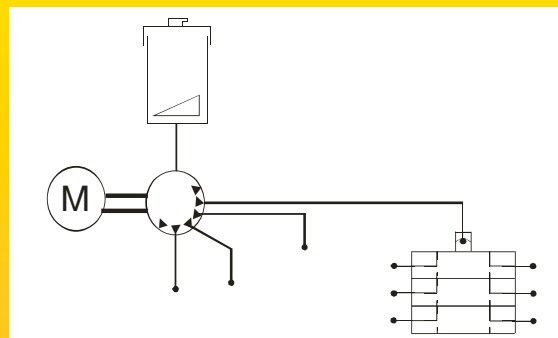
This flexibility makes the system a very worth while and cost effective alternative to dual line systems.



PEG - 250N



DPA



## APPLICATIONS FOR THIS SYSTEM

- 💧 All medium to heavy duty machinery.
- 💧 Mining and Quarrying equipment.
- 💧 Agricultural equipment.
- 💧 Marine applications.
- 💧 Scrap Metal machinery.
- 💧 Earthmoving machinery.